

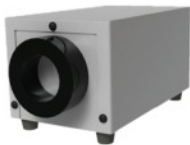
Apollo Creative

Interactive Light & Sound

LED Light Source User Guide

This guide has been written to help you get the most from your LED Light Source. Please ensure that you read this fully as it contains important information on setting up your Light Source. Failure to follow this advice may result in damage to the tube and invalidate your warranty.

Keep this guide in a safe place for future reference.



LED Light Source



Allen Key



Fibre Optic Strands (optional)



Power Supply /
Battery Charger

Setting up

1. Locate the small screw in the black collar on the light source. This secures the strands into the unit. Carefully loosen the screw (turning anti-clockwise) by using the 2mm Allen key supplied.
2. Slide the large end of the fibre optic strands into the collar. It should slide in easily and require no force.
3. Connect the power supply to the socket on the rear of the unit, or press the push button on those with a battery, the light source will illuminate the strands as soon as power is supplied.
4. Gently move the fibre optic strands in and out of the collar to adjust the amount of illumination. Take care not to push the strands too far into the unit as this could cause damage.
5. Tighten the screw in the collar using the Allen key until the strands are secure.

Charging

1. If using the battery powered light source (it can be identified by the push button on the back) it will need to be charged when the remaining battery charge is low. At this point you may notice dimmer LEDs, or, at very low charge, flashing colours.
2. Connect to the supplied charger and charge until the LED on the charger turns green.
3. If the battery charge is very low, the LED may turn green after a few minutes. In this instance, disconnect the charger and reconnect.
4. Charge time is approximately 4 hours. The light source will not operate with the charger attached.

Potential risks & warnings

1. Read and understand all these instructions before using the LED light source.
2. Never stare into the beam when the unit is turned on. LEDs emit a large amount of light which could be damaging to the eyes.
3. Do not operate the light source with a damaged power cord, or if it has been dropped or damaged.
4. Position the power cord so that it will not be tripped over, pulled or come into contact with hot surfaces.
5. If an extension lead is necessary, a cable with a current rating at least equal to that of the light source (1A) should be used.
6. Always connect the LED light source to a grounded outlet.
7. To reduce the risk of electrical shock, do not immerse the product in water or other liquids.
8. Do not dismantle the light source, contact the supplier or manufacturer if servicing is required. Incorrect assembly can cause electrical shock when the product is used.
9. If using a power supply other than the one supplied, it should always follow these specifications: 12V AC, 1000mA, 2.1mm plug, centre positive.
10. When using the battery powered version, batteries are only to be charged by adults or children at least 8 years old.

This LED light source is supplied by:



Manufactured by:

Apollo Creative
Knaresborough Technology Park
Manse Lane
Knaresborough
North Yorkshire
HG5 8LF

T: 01423 798232

E: sales@apollocreative.co.uk

W: www.apollocreative.co.uk